



## AIRCOSAVER™

save up to 15% of AC energy consumption at

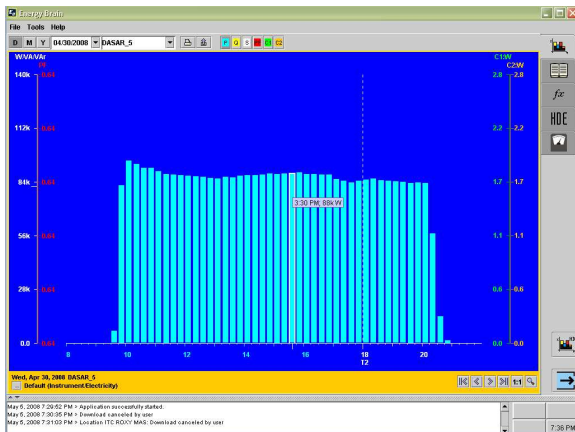
## ITC ROXY MAS

### AC properties:

- Type:	Package
- Location:	Dasar_5
- Compressor-1:	40.5 kW
- Compressor-2:	40.5 kW
- Fan:	24.6 kW
- Daily consumption:	939 kWh
-LWBP:	738 kWh
-WBP:	201 kWh

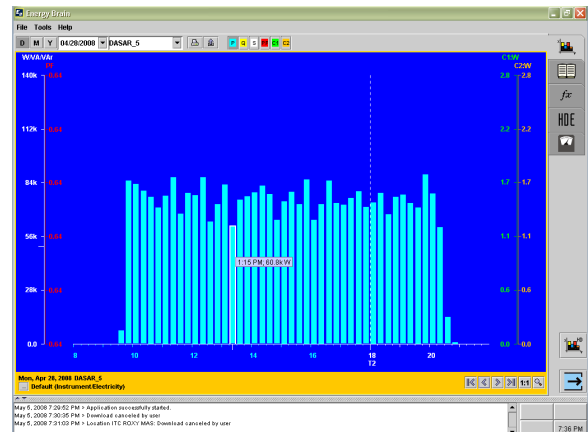


**AFTER SAVING**



Load profile without Aircosaver™

**BEFORE SAVING**



Load profile with Aircosaver™

### Saving with Aircosaver:

-Daily consumption:	815 kWh
-LWBP:	640 kWh
-WBP:	175 kWh
-Daily saving with Aircosaver:	
-LWBP:	98 kWh
-WBP:	26 kWh
- Annual saving:	Up to Rp. 27.000.000,-